

DJNS SURVEYING & MAPPING, INC.

P.O. BOX 25636

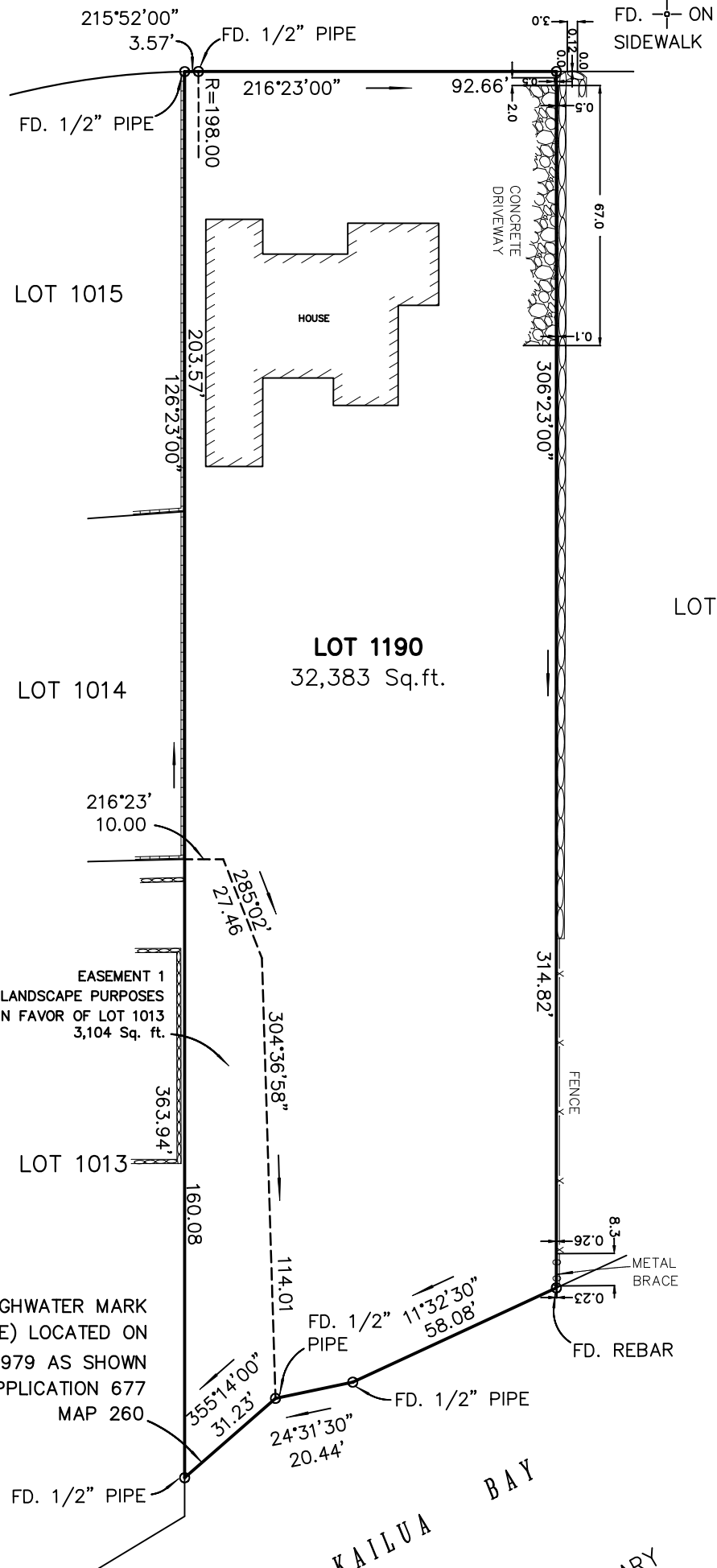
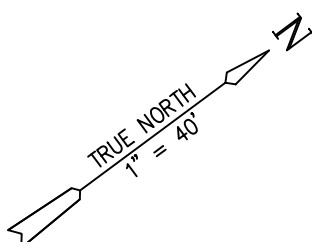
Honolulu, Hawaii 96825

Phone: (808) 395-5476, Fax: (808) 395-5477

e-mail: djns@hawaii.rr.com

EASEMENT 17
LOT 1142-C

KAILUANA PLACE



EASEMENT 1
FOR LANDSCAPE PURPOSES
IN FAVOR OF LOT 1013
3,104 Sq. ft.

HIGHWATER MARK
(VEGETATION LINE) LOCATED ON
SEPTEMBER 6, 1979 AS SHOWN
ON LAND COURT APPLICATION 677
MAP 260



KAILUA BAY
PRELIMINARY

THIS WORK WAS PREPARED BY
ME OR UNDER MY SUPERVISION.

DENNIS K. HASHIMOTO

PERIMETER SURVEY TAX MAP KEY: 4-3-22:20		
SCALE: 1" = 40'	APPROVED BY:	DRAWN BY: NMH
DATE: OCT. 17, 2011		REVISED: -
KAILUA, OAHU, HAWAII FIELD BOOK - 569:09		JOB NUMBER: 06449